



Measure 29: Bass clef, one flat key signature. The staff contains a sequence of notes: G2, F2, E2, D2, C2, B1, A1, G1. A slur covers the entire sequence, and a fermata is placed over the final G1 note.

*pp* ————— *ff* ————— *pp*

34

Measure 34: Bass clef, two sharps key signature. The staff contains a sequence of notes: G2, F2, E2, D2, C2, B1, A1, G1. A slur covers the entire sequence, and a fermata is placed over the final G1 note.

*pp* ————— *ff* ————— *pp*

39

Measure 39: Bass clef, three flats key signature. The staff contains a sequence of notes: G2, F2, E2, D2, C2, B1, A1, G1. A slur covers the entire sequence, and a fermata is placed over the final G1 note.

*pp* ————— *ff* ————— *pp*

44

Measure 44: Bass clef, two sharps key signature. The staff contains a sequence of notes: G2, F2, E2, D2, C2, B1, A1, G1. A slur covers the entire sequence, and a fermata is placed over the final G1 note.

*pp* ————— *ff* ————— *pp*

49

Measure 49: Bass clef, three flats key signature. The staff contains a sequence of notes: G2, F2, E2, D2, C2, B1, A1, G1. A slur covers the entire sequence, and a fermata is placed over the final G1 note.

*pp* ————— *ff* ————— *pp*

54

Measure 54: Bass clef, one sharp key signature. The staff contains a sequence of notes: G2, F2, E2, D2, C2, B1, A1, G1. A slur covers the entire sequence, and a fermata is placed over the final G1 note.

*pp* ————— *ff* ————— *pp*

59

Measure 59: Bass clef, four flats key signature. The staff contains a sequence of notes: G2, F2, E2, D2, C2, B1, A1, G1. A slur covers the entire sequence, and a fermata is placed over the final G1 note.

*pp* ————— *ff* ————— *pp*



Study #4

Flow Studies

106



*pp* ————— *ff* ————— *pp*

112



*pp* ————— *ff* ————— *pp*

118



*pp* ————— *ff* ————— *pp*

124



*pp* ————— *ff* ————— *pp*

130



*pp* ————— *ff* ————— *pp*

136



*pp* ————— *ff* ————— *pp*

142



*pp* ————— *ff* ————— *pp*

Study #5

Flow Studies

148



*pp* ————— *ff* ————— *pp*

155



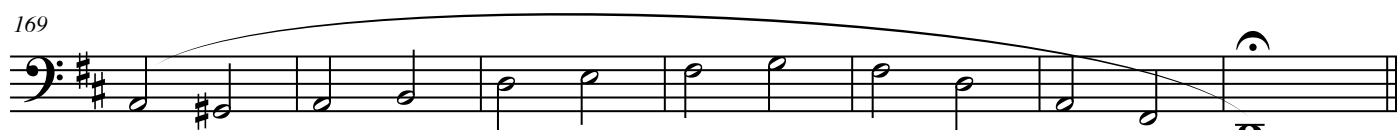
*pp* ————— *ff* ————— *pp*

162



*pp* ————— *ff* ————— *pp*

169



*pp* ————— *ff* ————— *pp*

176



*pp* ————— *ff* ————— *pp*

183



*pp* ————— *ff* ————— *pp*

190

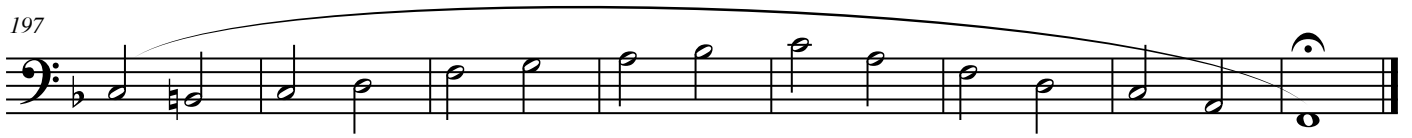


*mm* ————— *ff* ————— *mm*

Study #6

Flow Studies

197



*pp* ————— *ff* ————— *pp*

205



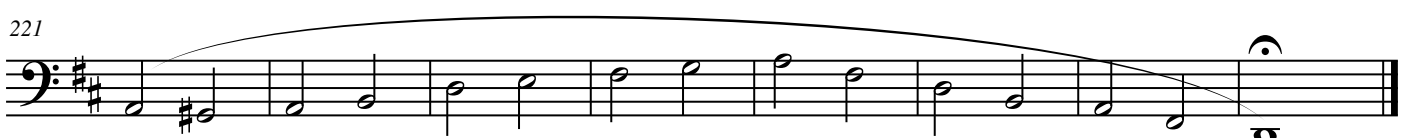
*pp* ————— *ff* ————— *pp*

213



*pp* ————— *ff* ————— *pp*

221



*pp* ————— *ff* ————— *pp*

229



*pp* ————— *ff* ————— *pp*

237



*pp* ————— *ff* ————— *pp*

245



*pp* ————— *ff* ————— *pp*

Study #7

Flow Studies

253



*pp* ————— *ff* ————— *pp*

262



*pp* ————— *ff* ————— *pp*

271



*pp* ————— *ff* ————— *pp*

280



*pp* ————— *ff* ————— *pp*

289



*pp* ————— *ff* ————— *pp*

298



*pp* ————— *ff* ————— *pp*

307

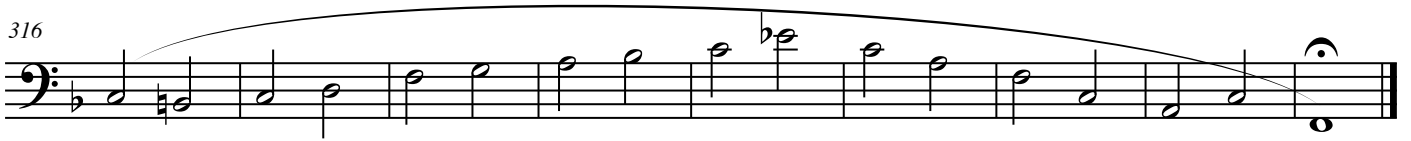


*pp* ————— *ff* ————— *pp*

Study #8

Flow Studies

316





Study #10

Flow Studies

449

A single bass clef staff containing a melodic line of eighth notes. The notes start on a low G and ascend stepwise to a high G, then descend back to the starting G. A long, sweeping slur covers the entire line, and a fermata is placed over the final note.

*pp* ————— *ff* ————— *pp*

460

A single bass clef staff containing a melodic line of eighth notes. The notes start on a low G and ascend stepwise to a high G, then descend back to the starting G. A long, sweeping slur covers the entire line, and a fermata is placed over the final note.

*pp* ————— *ff* ————— *pp*

471

A single bass clef staff containing a melodic line of eighth notes. The notes start on a low G and ascend stepwise to a high G, then descend back to the starting G. A long, sweeping slur covers the entire line, and a fermata is placed over the final note.

*pp* ————— *ff* ————— *pp*

482

A single bass clef staff containing a melodic line of eighth notes. The notes start on a low G and ascend stepwise to a high G, then descend back to the starting G. A long, sweeping slur covers the entire line, and a fermata is placed over the final note.

*pp* ————— *ff* ————— *pp*

493

A single bass clef staff containing a melodic line of eighth notes. The notes start on a low G and ascend stepwise to a high G, then descend back to the starting G. A long, sweeping slur covers the entire line, and a fermata is placed over the final note.

*pp* ————— *ff* ————— *pp*

504

A single bass clef staff containing a melodic line of eighth notes. The notes start on a low G and ascend stepwise to a high G, then descend back to the starting G. A long, sweeping slur covers the entire line, and a fermata is placed over the final note.

*pp* ————— *ff* ————— *pp*

515

A single bass clef staff containing a melodic line of eighth notes. The notes start on a low G and ascend stepwise to a high G, then descend back to the starting G. A long, sweeping slur covers the entire line, and a fermata is placed over the final note.

*pp* ————— *ff* ————— *pp*