

Pronunciation Exercises 2

Exercise #1

First line of musical notation for Exercise #1, measures 1-6. The staff is in bass clef. Measures 1-2 are in B-flat major (two flats). Measures 3-6 are in E major (one sharp). The exercise consists of eighth-note patterns with accents on the final notes of each measure.

7

Second line of musical notation for Exercise #1, measures 7-12. Measures 7-8 are in B-flat major. Measures 9-12 are in E major. The exercise consists of eighth-note patterns with accents on the final notes of each measure.

13

Third line of musical notation for Exercise #1, measures 13-18. Measures 13-14 are in E major. Measures 15-18 are in B-flat major. The exercise consists of eighth-note patterns with accents on the final notes of each measure.

19

Fourth line of musical notation for Exercise #1, measures 19-24. Measures 19-20 are in E major. Measures 21-24 are in B-flat major. The exercise consists of eighth-note patterns with accents on the final notes of each measure.

25

Fifth line of musical notation for Exercise #1, measures 25-30. Measures 25-26 are in B-flat major. Measures 27-30 are in E major. The exercise consists of eighth-note patterns with accents on the final notes of each measure.

31

Sixth line of musical notation for Exercise #1, measures 31-36. Measures 31-32 are in B-flat major. Measures 33-36 are in E major. The exercise consists of eighth-note patterns with accents on the final notes of each measure.

37 Exercise #2

First line of musical notation for Exercise #2, measures 37-40. Measures 37-38 are in B-flat major. Measures 39-40 are in E major. The exercise consists of eighth-note patterns with a whole note rest at the end of each measure.

41

Second line of musical notation for Exercise #2, measures 41-44. Measures 41-42 are in B-flat major. Measures 43-44 are in E major. The exercise consists of eighth-note patterns with a whole note rest at the end of each measure.

45

Third line of musical notation for Exercise #2, measures 45-48. Measures 45-46 are in E major. Measures 47-48 are in B-flat major. The exercise consists of eighth-note patterns with a whole note rest at the end of each measure.

49

Fourth line of musical notation for Exercise #2, measures 49-52. Measures 49-50 are in E major. Measures 51-52 are in B-flat major. The exercise consists of eighth-note patterns with a whole note rest at the end of each measure.

89



91



93



95



97



99



101



103



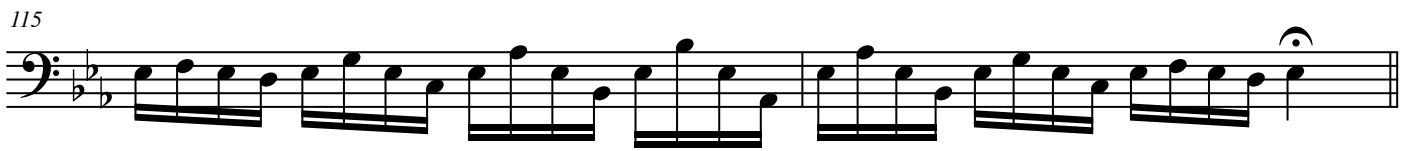
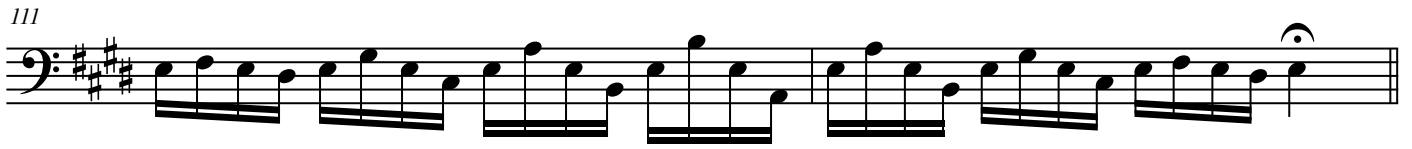
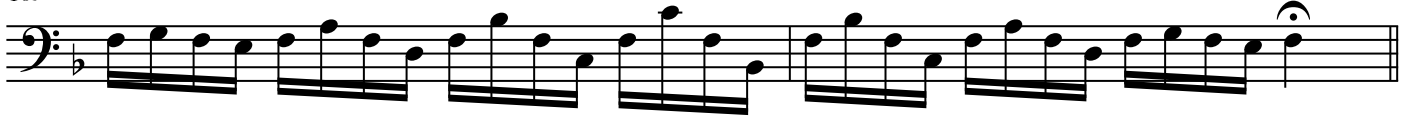
105



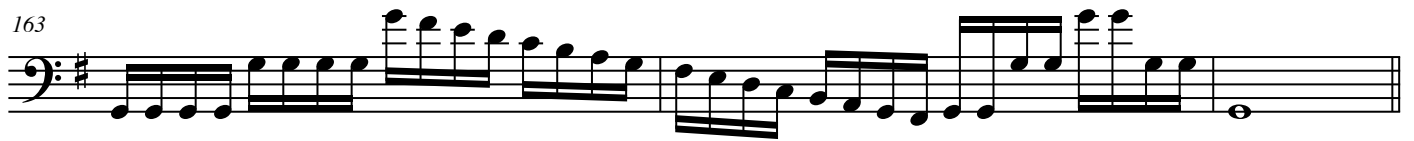
107



4
109 Exercise #5



**Exercise #6****Exercise #7**



Exercise #8



