

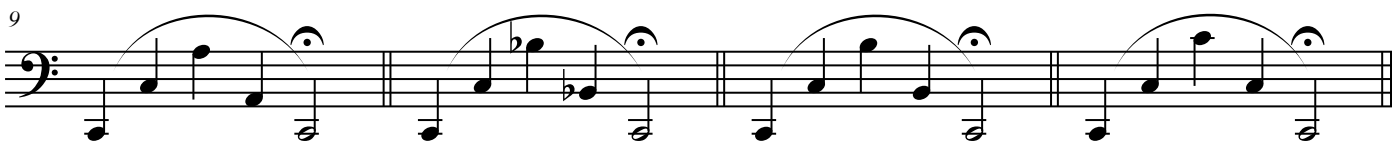
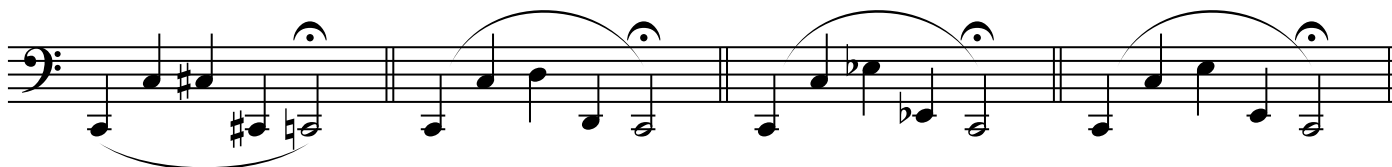
Tuba

Range Extension Exercises 2

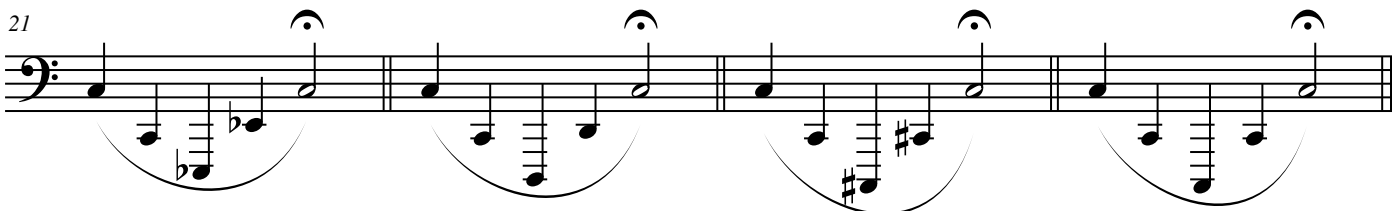
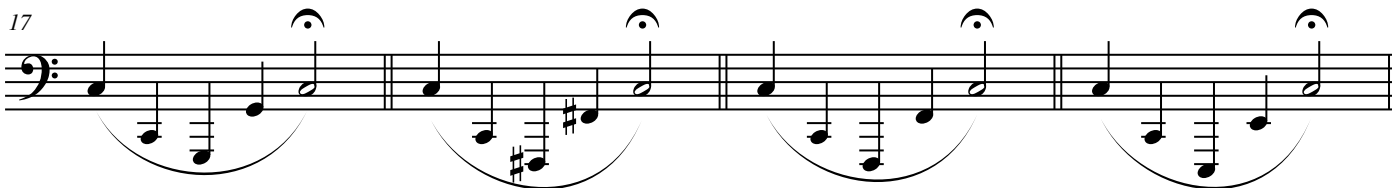
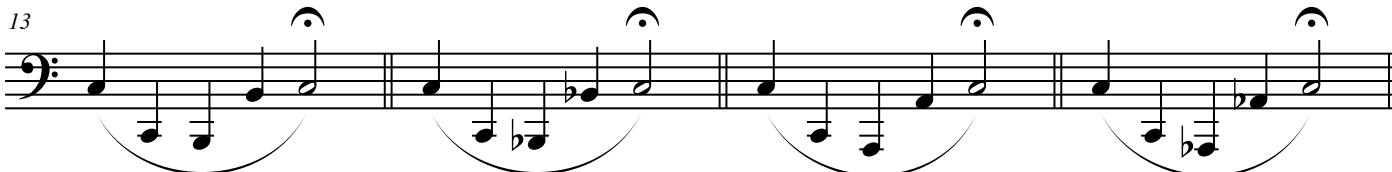
various/adapted Olt

Be sure to maintain an open air flow through all ranges. Go slowly, using one breath for each phrase. Center all pitches and strive for an even sound and timbre at all times.

Exercise #1



Exercise #2



Exercise #3

25

Measures 25-28 of Exercise #3. The notation is in bass clef. Measure 25 starts with a whole note chord (F2, A2, C3) and a half note (F2). Measure 26 has a whole note chord (F2, A2, C3) and a half note (A2). Measure 27 has a whole note chord (F2, A2, C3) and a half note (G2). Measure 28 has a whole note chord (F2, A2, C3) and a half note (F2). Each measure has a slur over the upper notes and a fermata over the final note.

29

Measures 29-32 of Exercise #3. Measure 29 has a whole note chord (F2, A2, C3) and a half note (F2). Measure 30 has a whole note chord (F2, A2, C3) and a half note (G2). Measure 31 has a whole note chord (F2, A2, C3) and a half note (A2). Measure 32 has a whole note chord (F2, A2, C3) and a half note (B2). Each measure has a slur over the upper notes and a fermata over the final note.

33

Measures 33-36 of Exercise #3. Measure 33 has a whole note chord (F2, A2, C3) and a half note (B2). Measure 34 has a whole note chord (F2, A2, C3) and a half note (A2). Measure 35 has a whole note chord (F2, A2, C3) and a half note (G2). Measure 36 has a whole note chord (F2, A2, C3) and a half note (F2). Each measure has a slur over the upper notes and a fermata over the final note.

Exercise #4

37

Measures 37-39 of Exercise #4. Measure 37 has a whole note chord (F2, A2, C3) and a half note (F2). Measure 38 has a whole note chord (F2, A2, C3) and a half note (G2). Measure 39 has a whole note chord (F2, A2, C3) and a half note (A2). Each measure has a slur over the upper notes and a fermata over the final note.

40

Measures 40-42 of Exercise #4. Measure 40 has a whole note chord (F2, A2, C3) and a half note (B2). Measure 41 has a whole note chord (F2, A2, C3) and a half note (A2). Measure 42 has a whole note chord (F2, A2, C3) and a half note (G2). Each measure has a slur over the upper notes and a fermata over the final note.

43

Measures 43-45 of Exercise #4. Measure 43 has a whole note chord (F2, A2, C3) and a half note (F2). Measure 44 has a whole note chord (F2, A2, C3) and a half note (G2). Measure 45 has a whole note chord (F2, A2, C3) and a half note (A2). Each measure has a slur over the upper notes and a fermata over the final note.

46

Measures 46-48 of Exercise #4. Measure 46 has a whole note chord (F2, A2, C3) and a half note (B2). Measure 47 has a whole note chord (F2, A2, C3) and a half note (A2). Measure 48 has a whole note chord (F2, A2, C3) and a half note (G2). Each measure has a slur over the upper notes and a fermata over the final note.

Exercise #5

49

Measures 49-51 of Exercise #5. The music is written in bass clef with a 3/4 time signature. It features a complex rhythmic pattern with eighth and sixteenth notes, often beamed together. The melody is characterized by wide intervals and frequent chromaticism. A fermata is placed over the final note of each measure. The key signature has one sharp (F#).

52

Measures 52-54 of Exercise #5. The musical notation continues with the same complex rhythmic and melodic patterns as the previous system. Each measure concludes with a fermata.

55

Measures 55-57 of Exercise #5. The notation maintains the intricate rhythmic and melodic structure. The use of wide intervals and chromaticism is consistent throughout.

58

Measures 58-60 of Exercise #5. The final system of the exercise, showing the continuation of the complex rhythmic and melodic patterns. Each measure ends with a fermata.