

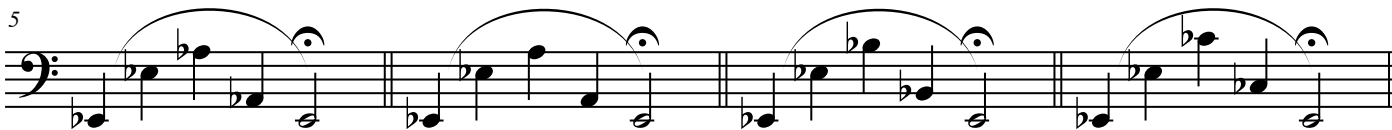
Tuba

Range Extension Exercises 2

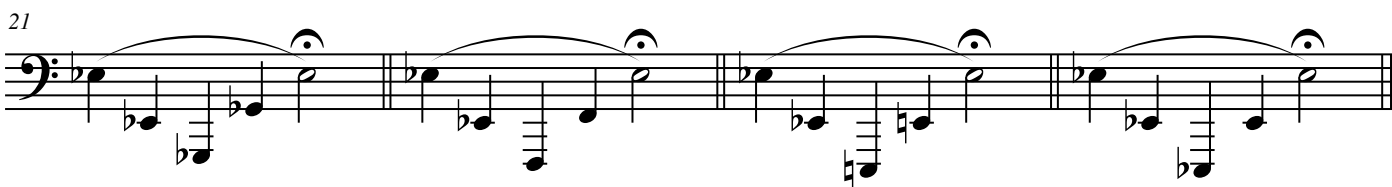
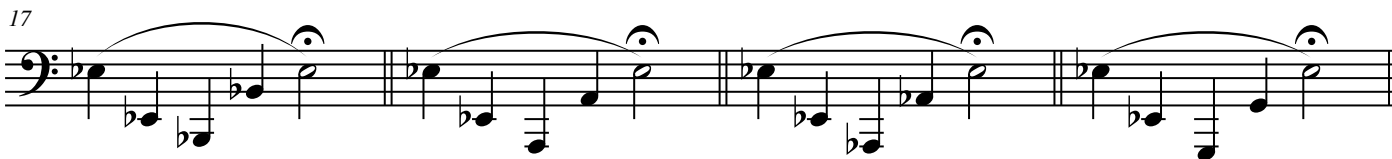
various/adapted Olt

Be sure to maintain an open air flow through all ranges. Go slowly, using one breath for each phrase.
Center all pitches and strive for an even sound and timbre at all times.

Exercise #1



Exercise #2



2

Exercise #3

25

Measures 25-28 of Exercise #3. The music is in bass clef with a key signature of one flat (B-flat). Each measure contains a half note in the upper voice and a half note in the lower voice, with a slur over the upper voice. The notes are: 25: B-flat, A, G, F; 26: G, F, E, D; 27: F, E, D, C; 28: D, C, B-flat, A.

29

Measures 29-32 of Exercise #3. The music is in bass clef with a key signature of one flat. Each measure contains a half note in the upper voice and a half note in the lower voice, with a slur over the upper voice. The notes are: 29: G, F, E, D; 30: F, E, D, C; 31: D, C, B-flat, A; 32: G, F, E, D.

33

Measures 33-36 of Exercise #3. The music is in bass clef with a key signature of one flat. Each measure contains a half note in the upper voice and a half note in the lower voice, with a slur over the upper voice. The notes are: 33: F, E, D, C; 34: G, F, E, D; 35: A, G, F, E; 36: B-flat, A, G, F.

Exercise #4

37

Measures 37-40 of Exercise #4. The music is in bass clef with a key signature of one flat. Each measure contains a half note in the upper voice and a half note in the lower voice, with a slur over the upper voice. The notes are: 37: G, F, E, D; 38: F, E, D, C; 39: D, C, B-flat, A; 40: G, F, E, D.

40

Measures 41-43 of Exercise #4. The music is in bass clef with a key signature of one flat. Each measure contains a half note in the upper voice and a half note in the lower voice, with a slur over the upper voice. The notes are: 41: F, E, D, C; 42: G, F, E, D; 43: A, G, F, E.

43

Measures 44-46 of Exercise #4. The music is in bass clef with a key signature of one flat. Each measure contains a half note in the upper voice and a half note in the lower voice, with a slur over the upper voice. The notes are: 44: B-flat, A, G, F; 45: G, F, E, D; 46: F, E, D, C.

46

Measures 47-50 of Exercise #4. The music is in bass clef with a key signature of one flat. Each measure contains a half note in the upper voice and a half note in the lower voice, with a slur over the upper voice. The notes are: 47: D, C, B-flat, A; 48: G, F, E, D; 49: F, E, D, C; 50: G, F, E, D.

Exercise #5

49

Measures 49-51 of Exercise #5. The music is written in bass clef with a key signature of one flat (B-flat). It features a complex rhythmic pattern with eighth and sixteenth notes, often beamed together. Each measure contains a melodic line with a slur and a bass line with chords. The first measure (49) starts with a B-flat in the bass line and a melodic line starting on G. The second measure (50) continues the pattern with a B-flat in the bass line and a melodic line starting on A. The third measure (51) has a B-flat in the bass line and a melodic line starting on B-flat.

52

Measures 52-54 of Exercise #5. The music continues in bass clef with a key signature of one flat. The rhythmic and melodic patterns are consistent with the previous measures. Measure 52 starts with a B-flat in the bass line and a melodic line starting on C. Measure 53 has a B-flat in the bass line and a melodic line starting on D. Measure 54 has a B-flat in the bass line and a melodic line starting on E.

55

Measures 55-57 of Exercise #5. The music continues in bass clef with a key signature of one flat. Measure 55 starts with a B-flat in the bass line and a melodic line starting on F. Measure 56 has a B-flat in the bass line and a melodic line starting on G. Measure 57 has a B-flat in the bass line and a melodic line starting on A.

58

Measures 58-60 of Exercise #5. The music continues in bass clef with a key signature of one flat. Measure 58 starts with a B-flat in the bass line and a melodic line starting on B-flat. Measure 59 has a B-flat in the bass line and a melodic line starting on C. Measure 60 has a B-flat in the bass line and a melodic line starting on D.