

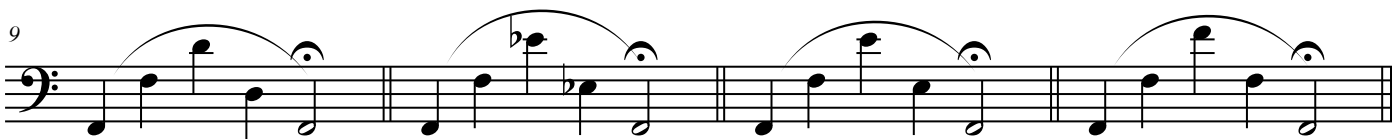
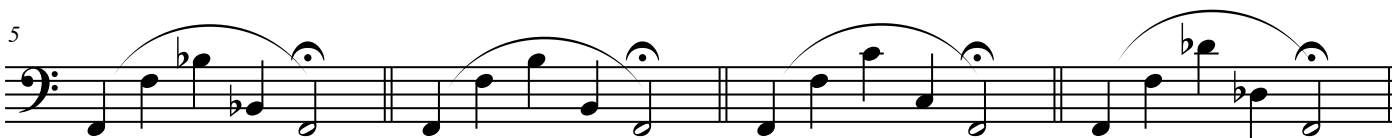
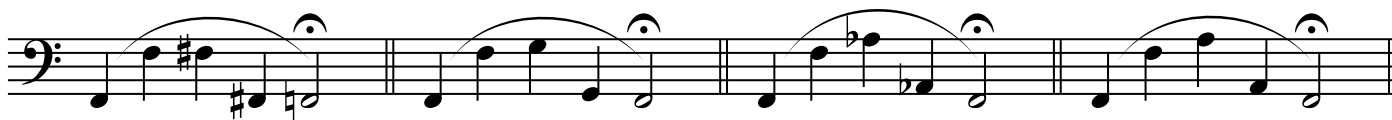
Tuba

# Range Extension Exercises 2

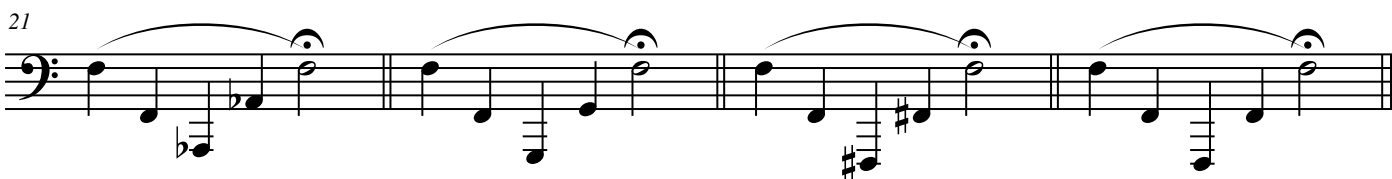
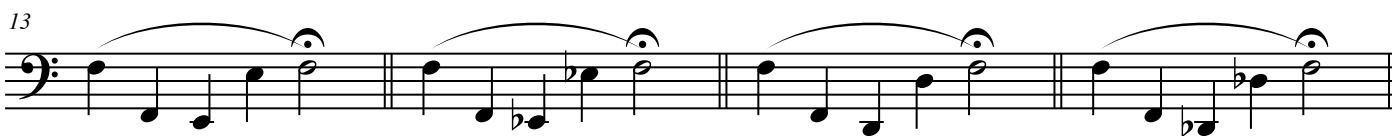
various/adapted Olt

Be sure to maintain an open air flow through all ranges. Go slowly, using one breath for each phrase. Center all pitches and strive for an even sound and timbre at all times.

## Exercise #1



## Exercise #2



2

### Exercise #3

25

Measures 25-28 of Exercise #3. The notation is in bass clef with a key signature of one sharp (F#). Each measure contains a half-note melody on the upper staff and a whole-note accompaniment on the lower staff. The melody consists of quarter notes and half notes, often beamed together, with slurs and accents. The accompaniment consists of quarter notes and half notes.

29

Measures 29-32 of Exercise #3. The notation continues in bass clef with a key signature of one sharp. The structure remains consistent with the previous measures, featuring a half-note melody and a whole-note accompaniment.

33

Measures 33-36 of Exercise #3. The notation continues in bass clef with a key signature of one sharp. The structure remains consistent with the previous measures, featuring a half-note melody and a whole-note accompaniment.

### Exercise #4

37

Measures 37-39 of Exercise #4. The notation is in bass clef with a key signature of one sharp. The melody is more complex, featuring eighth and sixteenth notes, often beamed together, with slurs and accents. The accompaniment consists of quarter notes and half notes.

40

Measures 40-42 of Exercise #4. The notation continues in bass clef with a key signature of one sharp. The melody is more complex, featuring eighth and sixteenth notes, often beamed together, with slurs and accents. The accompaniment consists of quarter notes and half notes.

43

Measures 43-45 of Exercise #4. The notation continues in bass clef with a key signature of one sharp. The melody is more complex, featuring eighth and sixteenth notes, often beamed together, with slurs and accents. The accompaniment consists of quarter notes and half notes.

46

Measures 46-48 of Exercise #4. The notation continues in bass clef with a key signature of one sharp. The melody is more complex, featuring eighth and sixteenth notes, often beamed together, with slurs and accents. The accompaniment consists of quarter notes and half notes.

## Exercise #5

49

Measures 49-51 of Exercise #5. The music is written in bass clef with a key signature of one sharp (F#). It features a complex rhythmic pattern with eighth and sixteenth notes, often beamed together. Each measure contains a melodic line with a slur and a bass line with a slur. The melodic line includes various intervals, including tritones and chromatic runs. The bass line consists of eighth and sixteenth notes, often beamed together. The piece concludes with a double bar line.

52

Measures 52-54 of Exercise #5. The music continues with the same complex rhythmic pattern. Each measure contains a melodic line with a slur and a bass line with a slur. The melodic line includes various intervals, including tritones and chromatic runs. The bass line consists of eighth and sixteenth notes, often beamed together. The piece concludes with a double bar line.

55

Measures 55-57 of Exercise #5. The music continues with the same complex rhythmic pattern. Each measure contains a melodic line with a slur and a bass line with a slur. The melodic line includes various intervals, including tritones and chromatic runs. The bass line consists of eighth and sixteenth notes, often beamed together. The piece concludes with a double bar line.

58

Measures 58-60 of Exercise #5. The music continues with the same complex rhythmic pattern. Each measure contains a melodic line with a slur and a bass line with a slur. The melodic line includes various intervals, including tritones and chromatic runs. The bass line consists of eighth and sixteenth notes, often beamed together. The piece concludes with a double bar line.